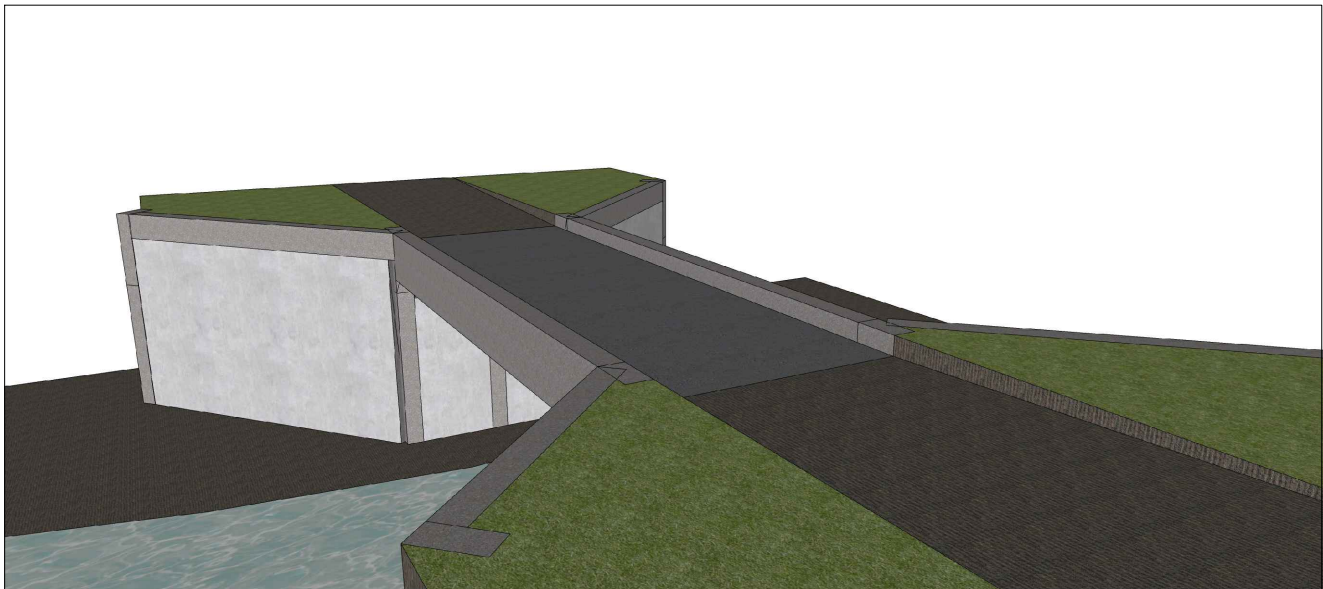
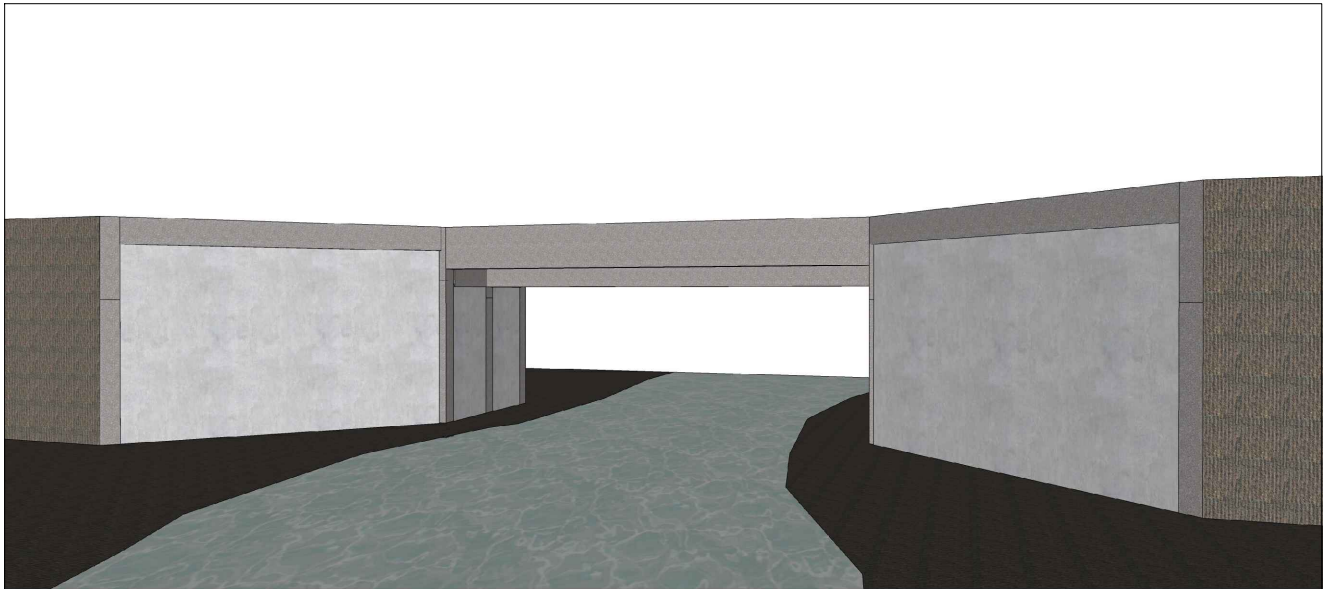
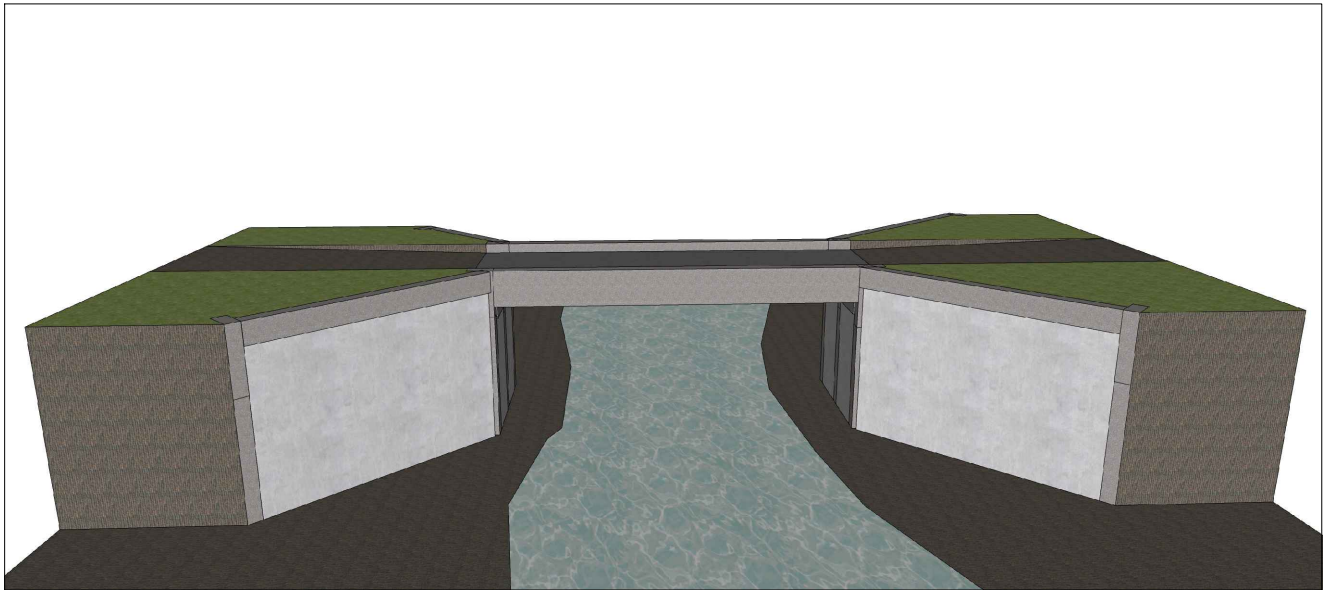
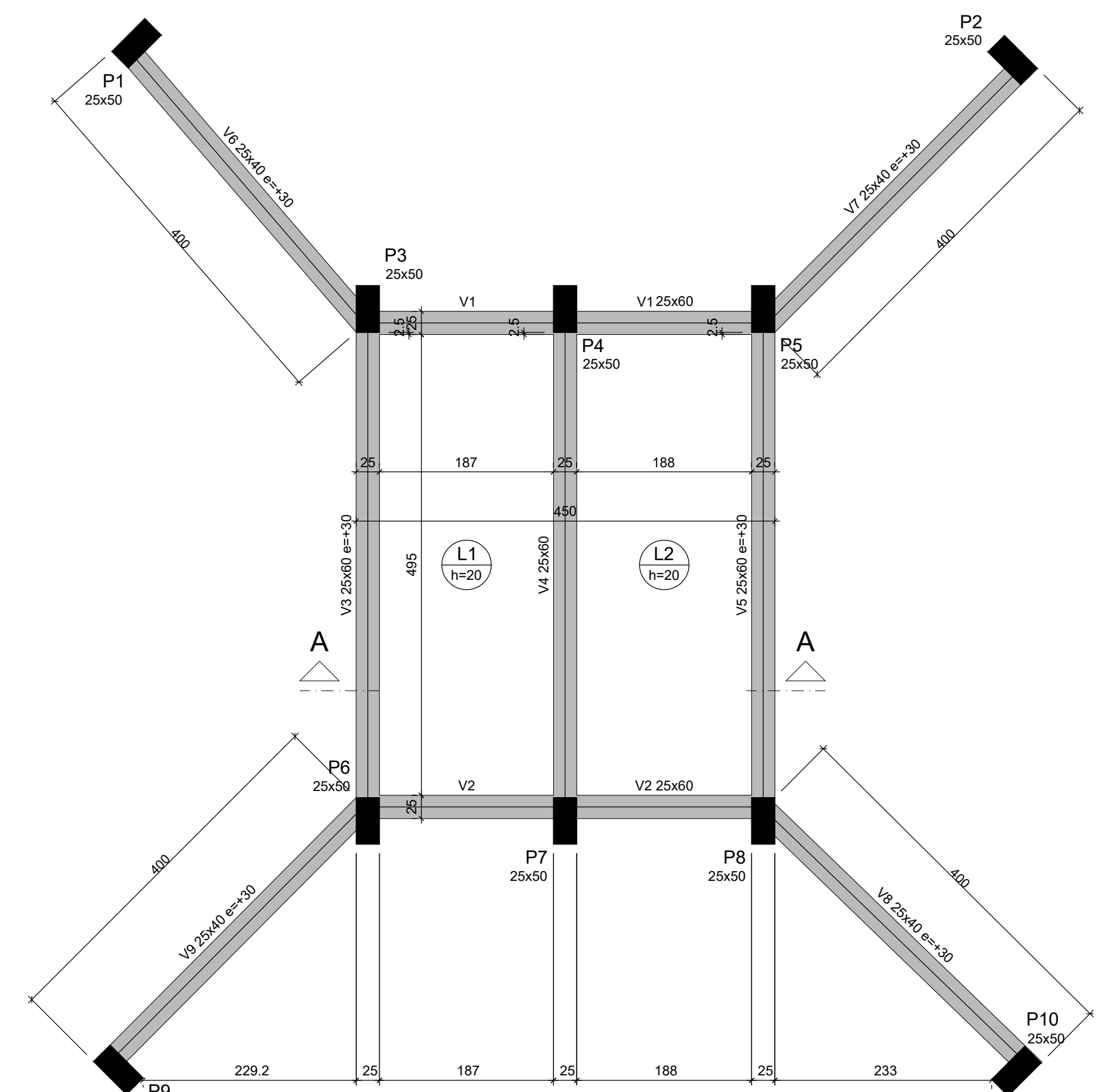


Perspectivas



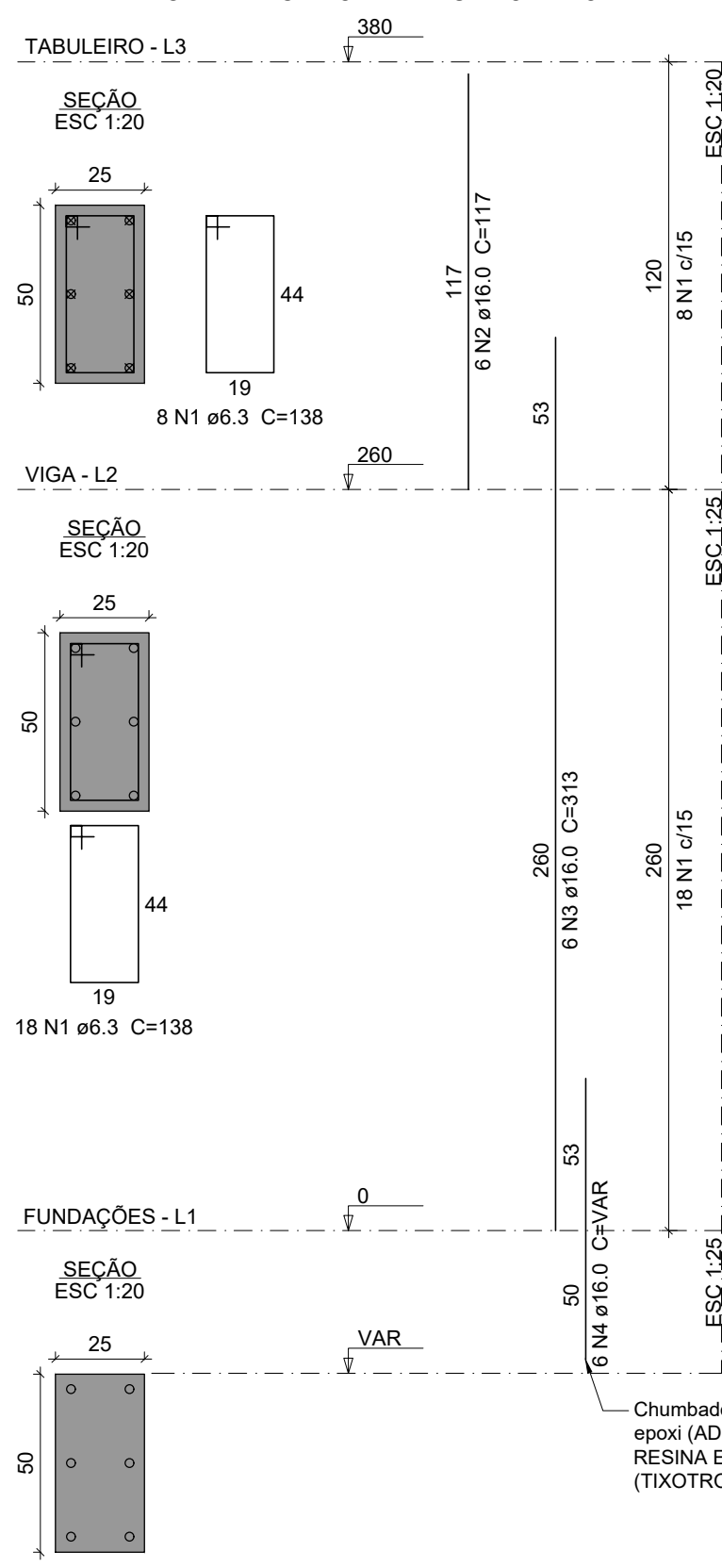
Situação/Localização

| | | |
|---|--|-----------------------|
|  | <p>PONTILHÃO LINHA SÃO PAULO</p> | |
| <p>Responsável(eis) Técnico(s):</p> <p>Henrique Ferronato Nardi Engenheiro Civil CREA RS/223324</p> | <p>Proprietário(s):</p> <p>Prefeitura de Doutor Ricardo CNPJ: 01.613.360/0001-21</p> | |
| <p>Endereço: Linha São Paulo, Doutor Ricardo/RS</p> | | |
| <p>Descrição: Situação/Localização e Perspectivas</p> | | |
| <p>Desenho: Alex</p> | <p>Escala: Indicada</p> | |
| <p>Área Total: 24,75 m²</p> | <p>Data: Setembro/2024</p> | <p>Prancha: 01/02</p> |



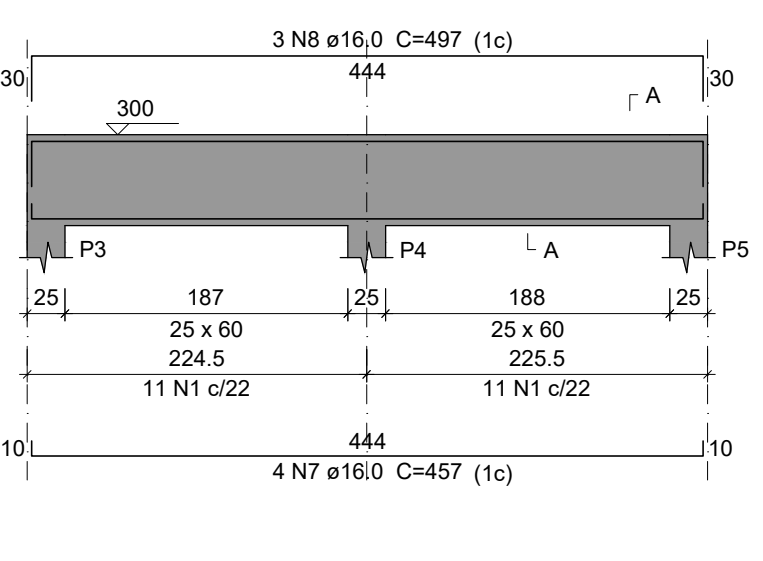
Forma do pavimento Tabuleiro (Nível 350)

P1=P2=P3=P4=P5=P6=P7=P8=P9=P10

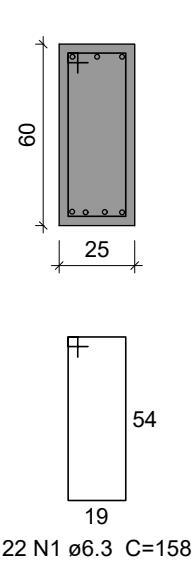


Chumbadores Ø 16mm com tratamento químico epóxi (ADESIVO ESTRUTURAL A BASE DE RESINA EPOXI, BICOMPONENTE, PASTOSO (TIXOTRÓPICO))

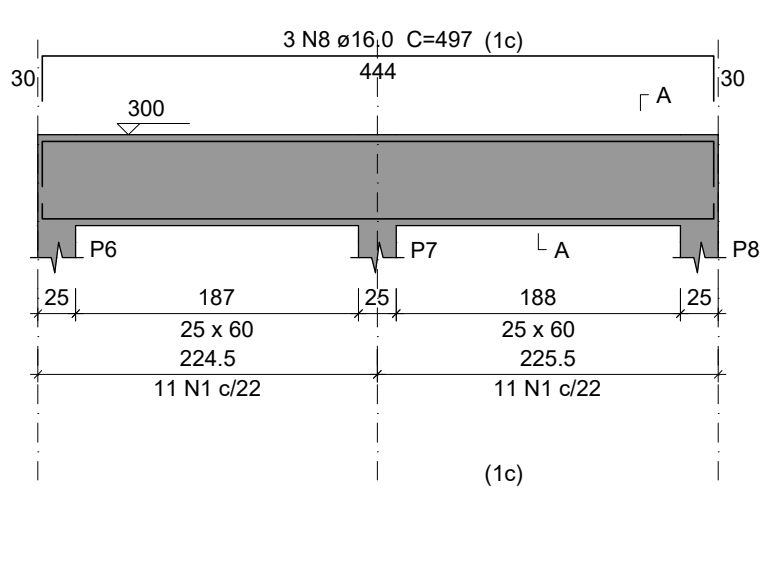
V1
ESC 1:50



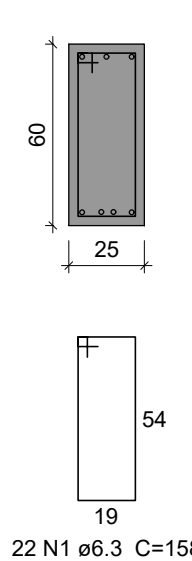
SEÇÃO A-A
ESC 1:25



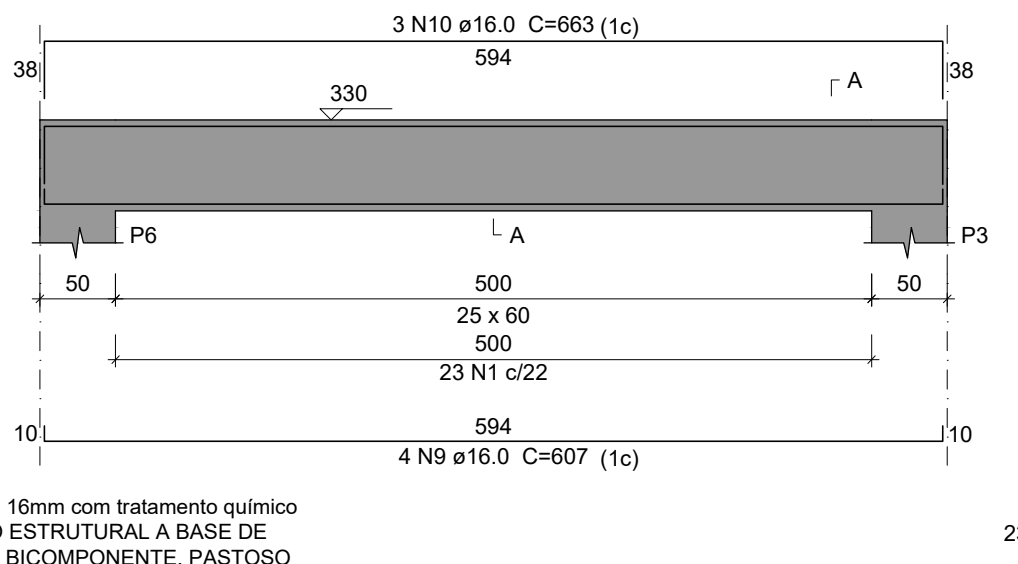
V2
ESC 1:50



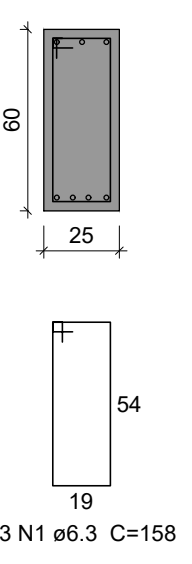
SEÇÃO A-A
ESC 1:25



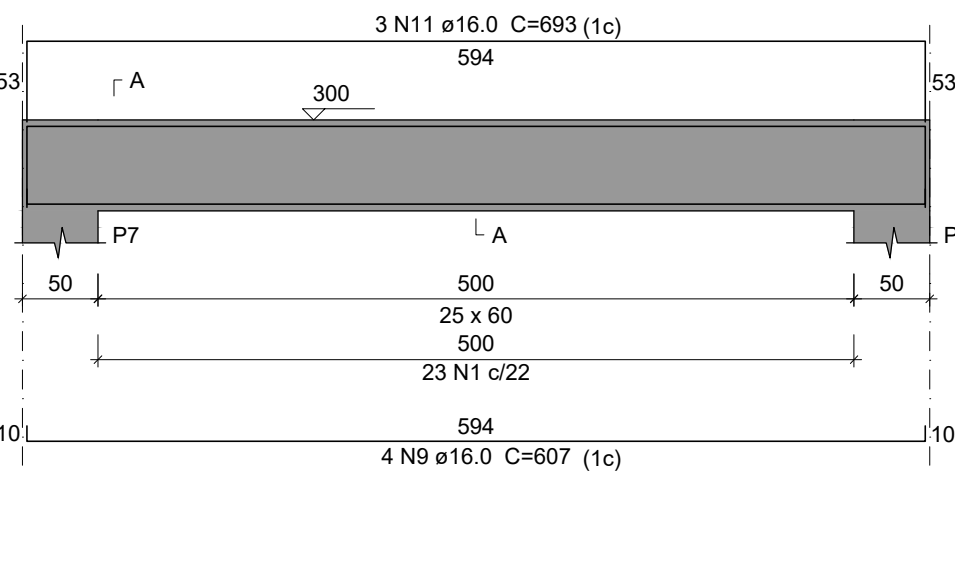
V3
ESC 1:50



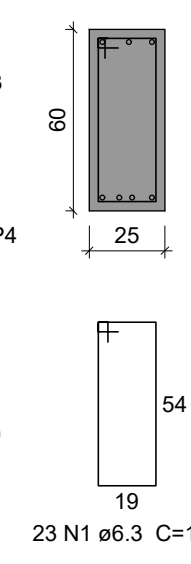
SEÇÃO A-A
ESC 1:25



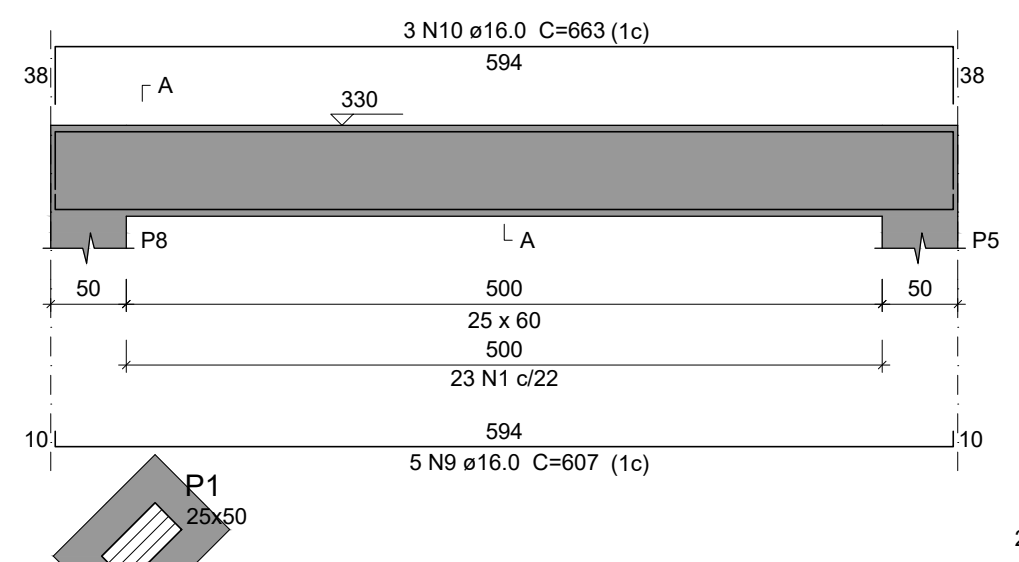
V4
ESC 1:50



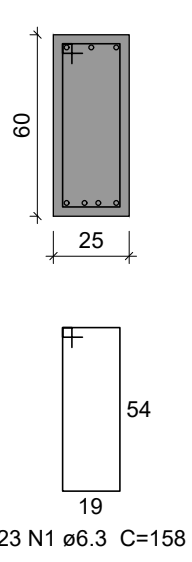
SEÇÃO A-A
ESC 1:25



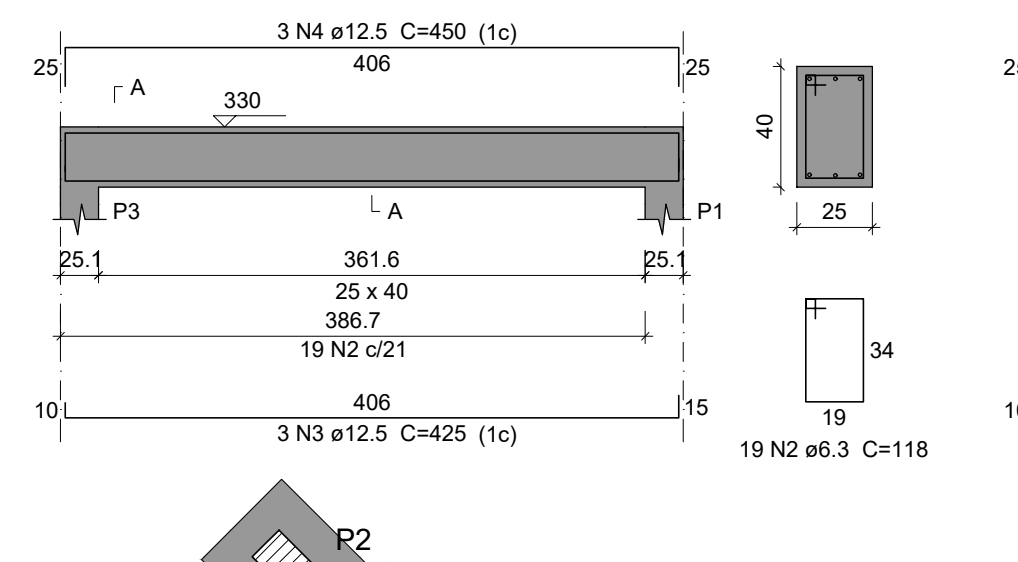
V5
ESC 1:50



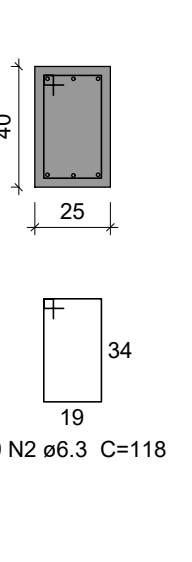
SEÇÃO A-A
ESC 1:25



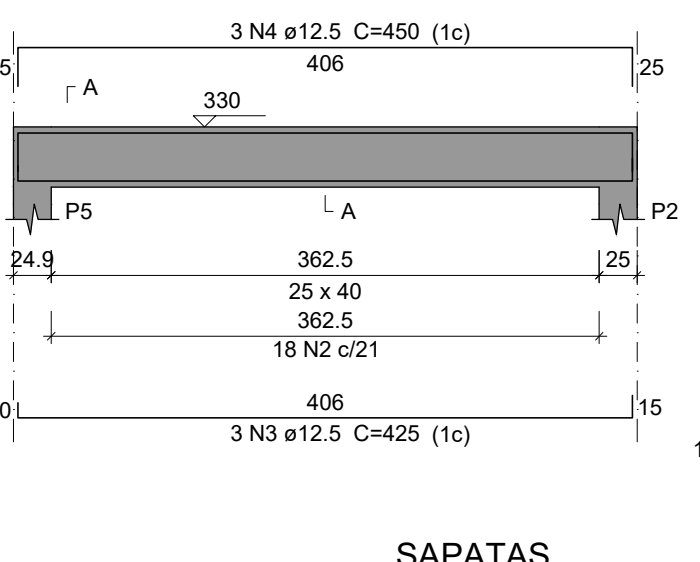
V6
ESC 1:50



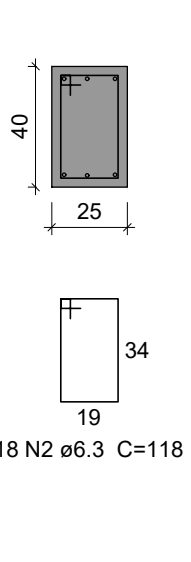
SEÇÃO A-A
ESC 1:25



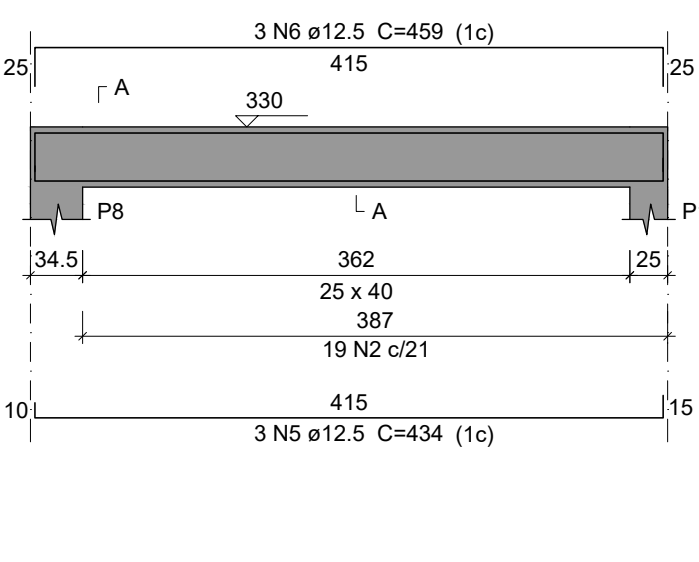
V7
ESC 1:50



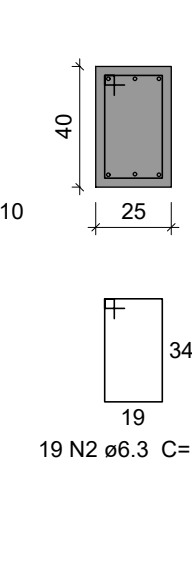
SEÇÃO A-A
ESC 1:25



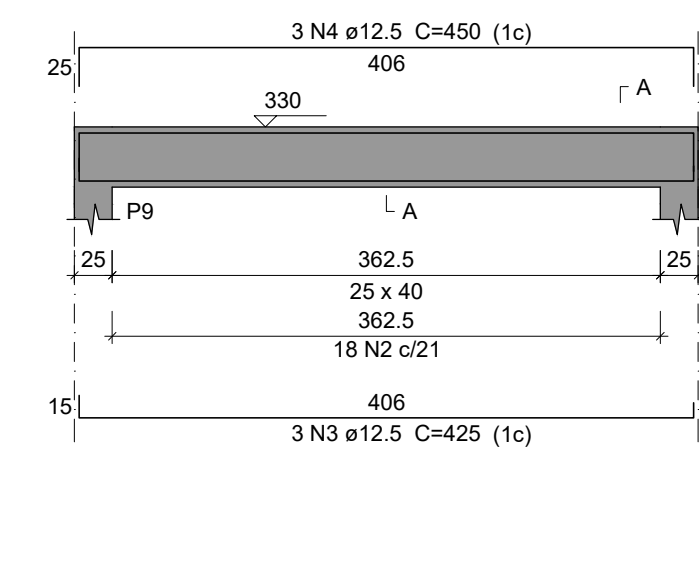
V8
ESC 1:50



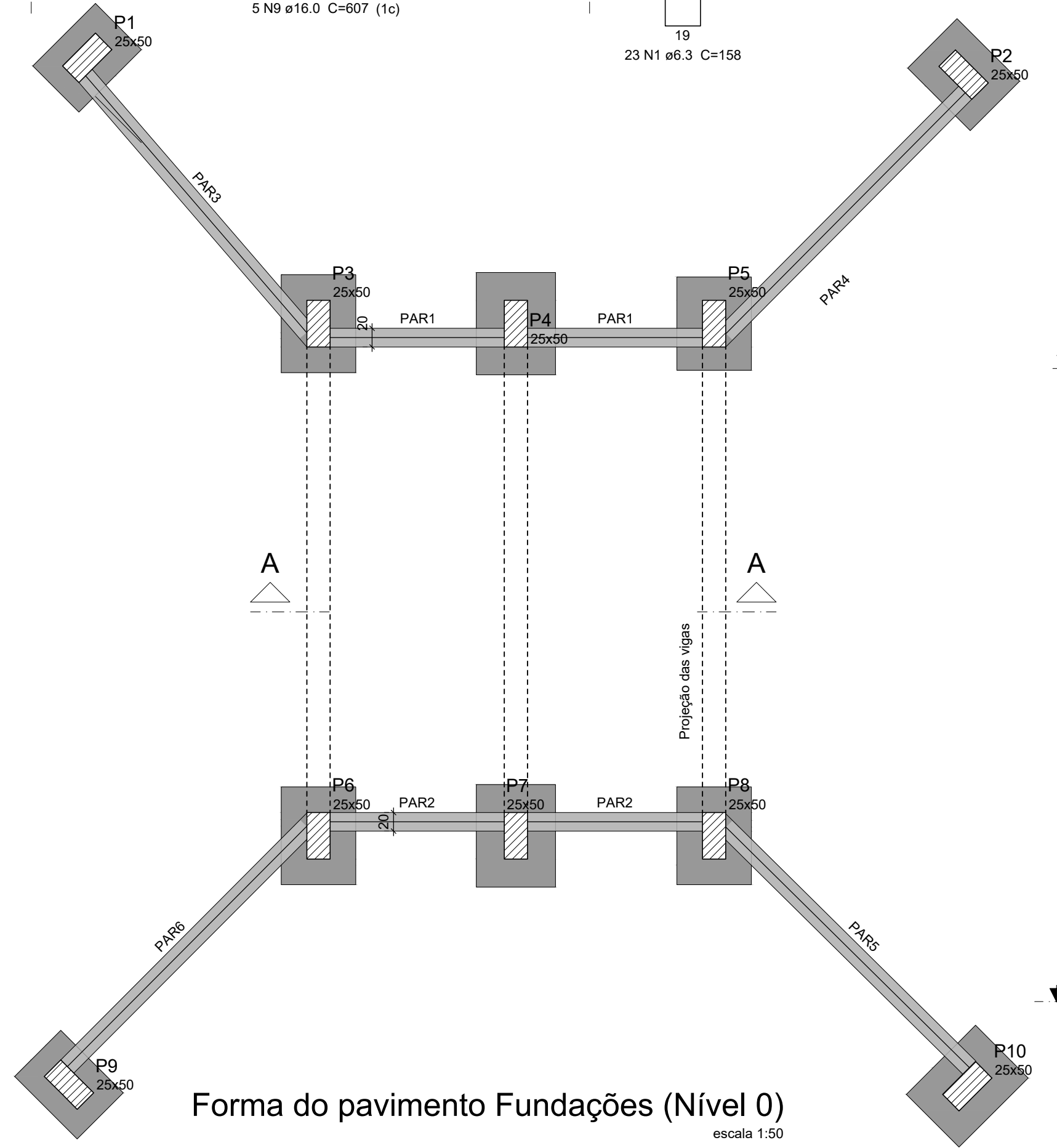
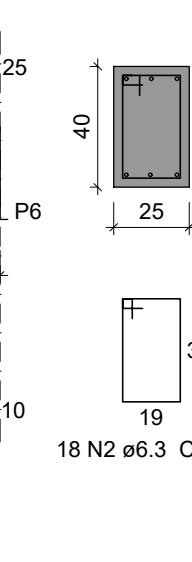
SEÇÃO A-A
ESC 1:25



V9
ESC 1:50



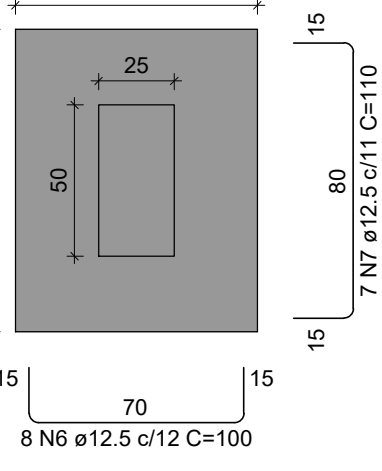
SEÇÃO A-A
ESC 1:25



Forma do pavimento Fundações (Nível 0)

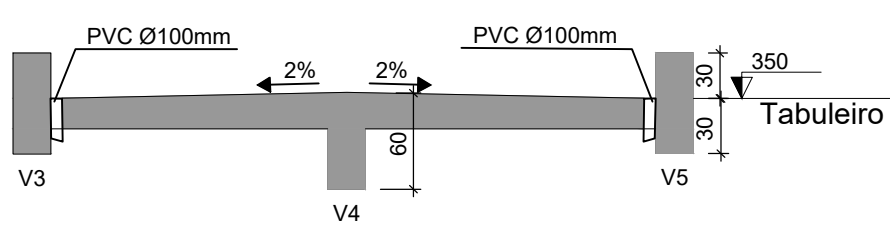
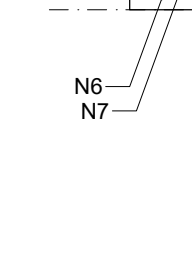
SAPATAS

PLANTA



CORTE

ESC 1:25

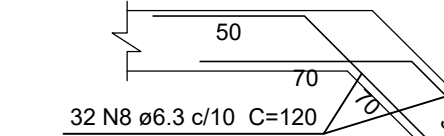


Corte A-A

Escala 1:50

PAR1-PAR3

escala 1:25



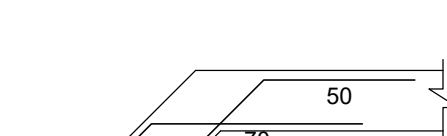
PAR2-PAR5

escala 1:25



PAR1-PAR4

escala 1:25



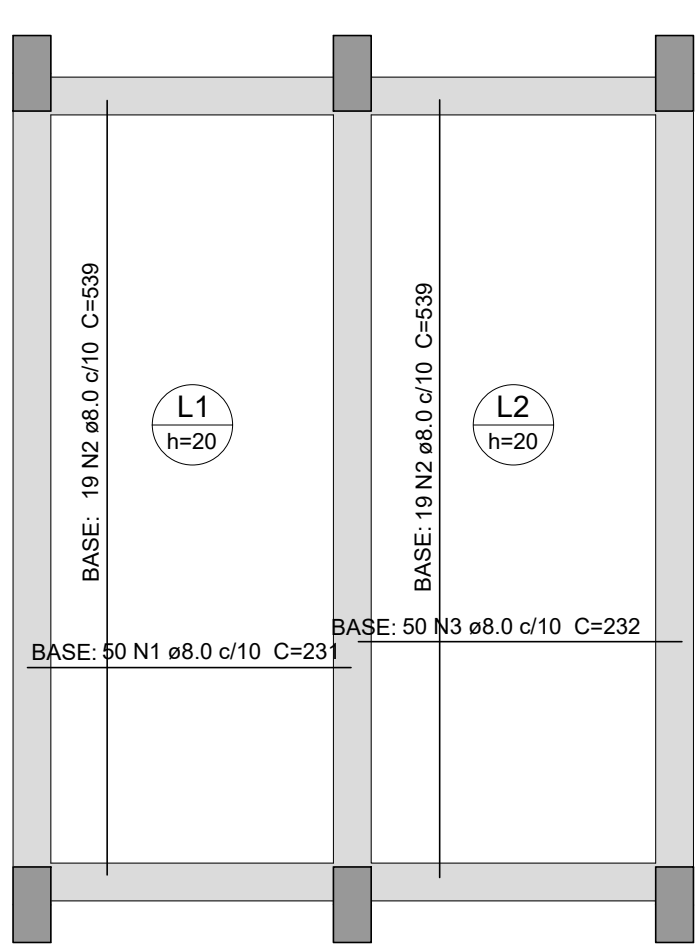
PAR2-PAR6

escala 1:25



Armação positiva das lajes do pavimento Tabuleiro

escala 1:50



| Características dos materiais | |
|-------------------------------|-----------|
| 1ck | Ecs |
| (kgf/cm²) | (kgf/cm²) |
| 300 | 322061 |

Dimensão máxima do agregado = 19 mm

Legenda dos pilares

Legenda das vigas e paredes

RESUMO DO AÇO - ANCORAGEM PAREDES/ PILARES

| AÇO | DIAM (mm) | C.TOTAL (m) | PESO + 10% (kg) |
|-----------------|-----------|-------------|-----------------|
| CA50 | 16.0 | 99.44 | 172.61 |
| PESO TOTAL (kg) | | CA50 | 172.61 |

Adeviso epóxi = 4 kg

RESUMO DO AÇO - SAPATAS

| AÇO | DIAM (mm) | C.TOTAL (m) | PESO + 10% (kg) |
|-----------------|-----------|-------------|-----------------|
| CA50 | 12.5 | 157 | 161.7 |
| PESO TOTAL (kg) | | CA50 | 161.7 |

Volume de concreto (C-30) = 1.8 m³
Área de forma = 10.0 m²

RESUMO DO AÇO - PILARES

| AÇO | DIAM (mm) | C.TOTAL (m) | PESO + 10% (kg) |
|-----------------|-----------|-------------|-----------------|
| CA50 | 6.3 | 353.3 | 95.1 |
| PESO TOTAL (kg) | | CA50 | 95.1 |

Volume de concreto (C-30) = 4.74 m³
Área de forma = 56.85 m²

RESUMO DO AÇO - PAREDES DE CONCRETO

| AÇO | DIAM (mm) | C.TOTAL (m) | PESO + 10% (kg) |
|-----------------|-----------|-------------|-----------------|
| CA50 | 6.3 | 3124 | 840.9 |
| PESO TOTAL (kg) | | CA50 | 840.9 |

Volume de concreto (C-30) = 15.93 m³
Área de forma = 164.12 m²

RESUMO DO AÇO - VIGAS

| AÇO | DIAM (mm) | C.TOTAL (m) | PESO + 10% (kg) |
|-----------------|-----------|-------------|-----------------|
| CA50 | 6.3 | 265.9 | 71.6 |
| PESO TOTAL (kg) | | CA50 | 71.6 |

Volume de concreto (C-30) = 4.95 m³
Área de forma = 43.51 m²

RESUMO DO AÇO - LAJES

| AÇO | DIAM (mm) | C.TOTAL (m) | PESO + 10% (kg) |
|-----------------|-----------|-------------|-----------------|
| CA50 | 8.0 | 436.4 | 189.4 |
| PESO TOTAL (kg) | | CA50 | 189.4 |

Volume de concreto (C-30) = 3.68 m³
Área de forma = 18.38 m²

Legenda dos pilares

Legenda das vigas e paredes



PONTILHÃO LINHA SÃO PAULO

Responsável(eis) Técnico(s):

Proprietário(s):

Henrique Ferronato Nardi
Engenheiro Civil
CREA RS/223324

Prefeitura de Doutor Ricardo
CNPJ: 01.613.360/0001-21

Endereço: Linha São Paulo, Doutor Ricardo/RS

Descrição: Detalhamento Estrutural

Desenho: Henrique

Escala: Indicada

Área Total: 24,75 m²

Data: Setembro/2024

Prancha: 02/02